



**GWANDA™**  
*Smart Network Solutions*

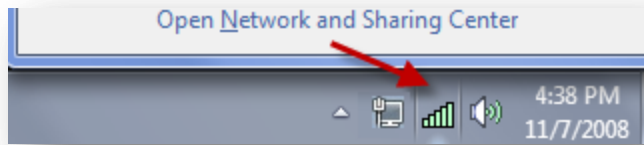
## **Connecting to a Wireless Network**



*Instructional Document for Windows XP, Vista, 7, and MAC OSX*

## WINDOWS 7

1. Open **Connect to a Network** by clicking the network icon (📶 or 🖨️) in the notification area.



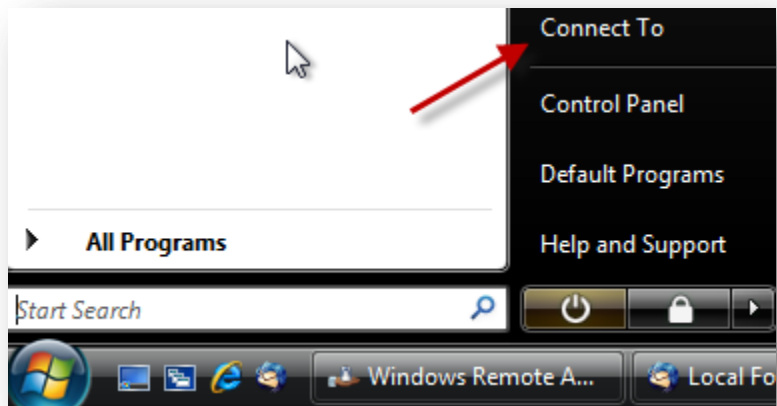
2. In the list of networks, click the network, SABTR, and then click **Connect**.



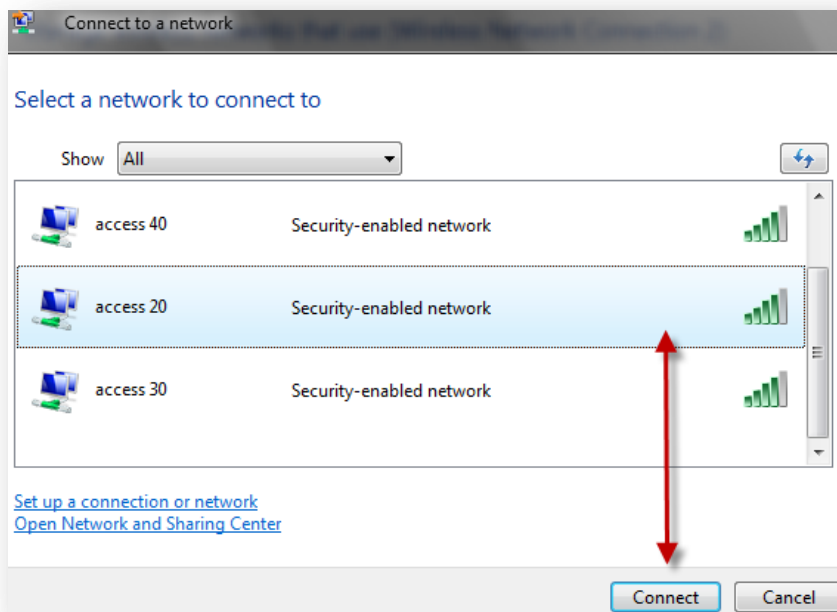
1. Enter the WPA key: thebeachisfun

## WINDOWS VISTA

1. Open Connect to a Network by clicking the **Start** button , and then clicking **Connect to**.



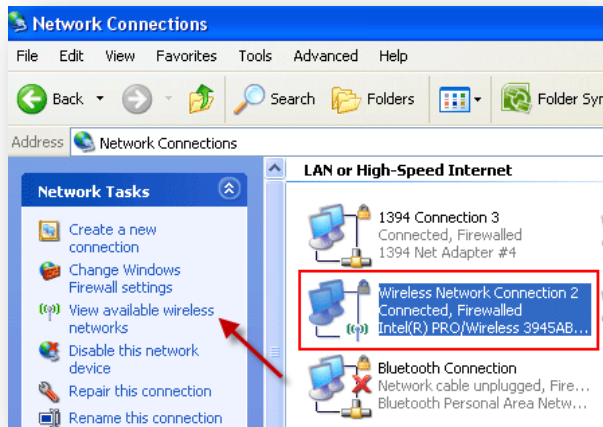
2. In the list of networks, click the network ,SABTR, and then click **Connect**.



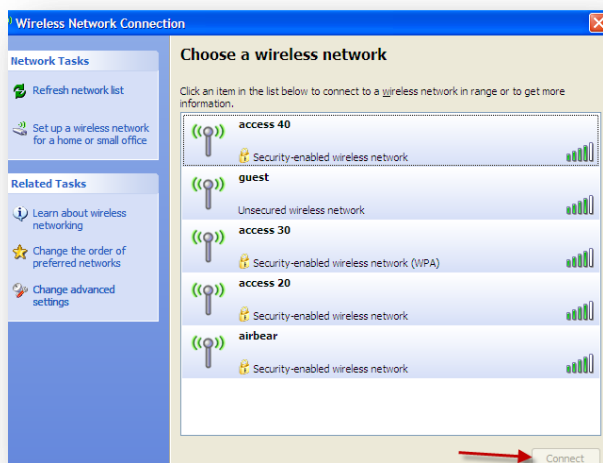
2. Enter the WPA key: thebeachisfun

## WINDOWS XP

3. Click **Start**, click **Control Panel**, click **Network and Internet Connections**, and then click **Network Connections**.




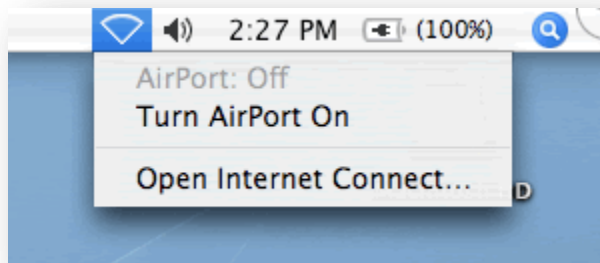
4. Click the wireless network connection icon, and then, under **Network Tasks**, click **View available wireless networks**.



5. Choose the wireless network, **SABTR**, from the list that appears, and then click **Connect**.
6. Enter the WPA key: **thebeachisfun**

## MAC OSX

1. On the menu bar, click the AirPort icon , and select **Turn AirPort On**



2. Choose the wireless network SABTR



3. Enter the WPA key: thebeachisfun

## NEED FURTHER ASSISTANCE?

Tenants needing further assistance with wireless connectivity issues should call 904-810-5291 and leave a message with the following information:

- Your name
- Call back number
- Resort name
- Unit number

Support hours are from 9am to 5pm every day of the year and someone will return your call as soon as possible between these times.